





**Ordering key**

**Performance and self locking table**

Load [N] / Full Load Speed [mm/s]					Self-locking	Screw		Motor	
						L	S	D2	24 V DC
–	–	3 000 / 8	Not self-locking	4 000 / 5	Self-locking	L	S	D2	24 V DC
1 000 / 45	Not self-locking	2 000 / 18	Not self-locking	–	–	L	N	D2	24 V DC
–	–	3 000 / 8	Not self-locking	4 000 / 5	Self-locking	L	S	D1	12 V DC
1 000 / 50	Not self-locking	2 000 / 17	Not self-locking	–	–	L	N	D1	12 V DC
–	–	–	–	2 600 / 5	Self-locking	L	S	A2	230 V AC
500 / 50	Not self-locking	1 000 / 18	Not self-locking	1 500 / 10	Self-locking	L	N	A2	230 V AC
–	–	–	–	4 500 / 5	Self-locking	L	S	A4	3x400 V AC
1 000 / 50	Not self-locking	2 500 / 15	Not self-locking	3 200 / 10	Self-locking	L	N	A4	3x400 V AC
<b>10</b>		<b>30</b>		<b>50</b>					

C A H M - 3 1 - L 0 - - 0 - 0 0 0

**Type**

**Size (Gear Center Distance)**

50 mm 3 1

**Gear Ratio**

10 1 0  
30 3 0  
50 5 0

**Screw Type**

Lead screw 12.5x6 L S  
Lead screw 12.5x12.5 L N

**Stroke**

100 mm 0 1 0 0  
200 mm 0 2 0 0  
300 mm 0 3 0 0  
400 mm 0 4 0 0  
500 mm 0 5 0 0  
600 mm 0 6 0 0  
700 mm 0 7 0 0

**Motor**

12 V DC D 1  
24 V DC D 2  
3x400 V AC A 4  
230 V AC A 2

**Front Attachment**

No option = Standard trough hole D=10mm H8 0

**Option 1 - Brake**

No option 0  
Free wheel brake on push load 1028,6226 1 1  
Free wheel brake on pull load 1028,0002 2 2  
Friction brake for push and pull load 3 3

**Option 2**

No option 0  
Limit switch L

**Customer option**

0 0 0

© SKF is a registered trademark of the SKF Group.

© SKF Group 2015

The contents of this publication are the copyright of the publisher and may not be reproduced (even extracts) unless prior written permission is granted. Every care has been taken to ensure the accuracy of the information contained in this publication but no liability can be accepted for any loss or damage whether direct, indirect or consequential arising out of the use of the information contained herein.

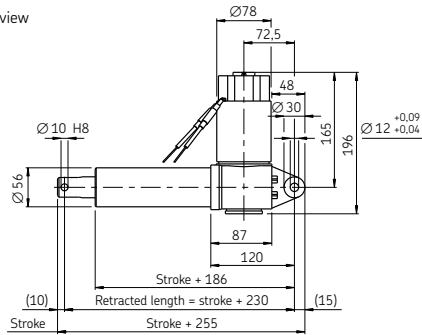
PUB MT/P8 15706 EN · October 2015



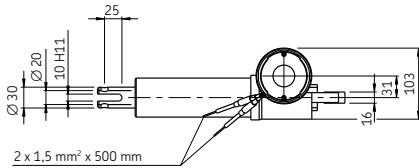
**Dimensional drawing**

Motor  
D1 – 12 V DC  
D2 – 24 V DC

Side view

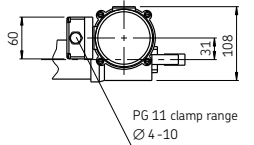
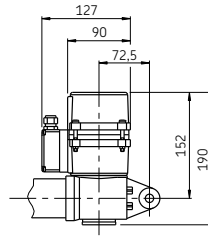


Top view



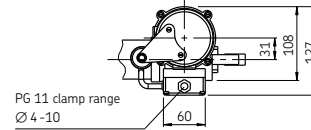
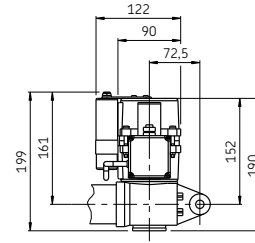
Option 1 – Brake: 0 – No option  
Option 2: 0 – No option

Motor  
A4 – 3x400 V AC



Option 1 – Brake: 0 – No option  
Option 2: 0 – No option

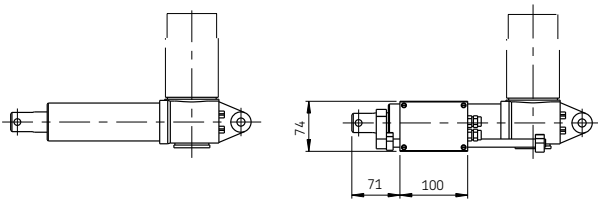
Motor  
A2 – 230 V AC



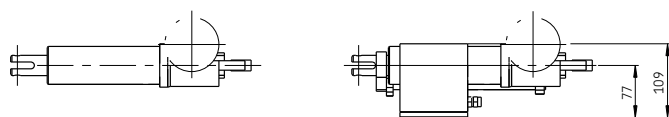
Option 1 – Brake: 0 – No option  
Option 2: 0 – No option

**Dimensional drawing**

Side view



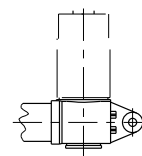
Top view



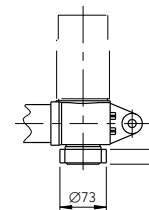
Option 2:  
0 – No option

Option 2:  
L – Limit Switch

Side view



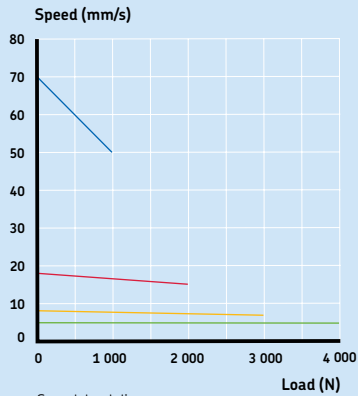
Option 1 – Brake:  
0 – No option



Option 1 – Brake:  
1 – Free wheel brake on push load 1028,6226  
2 – Free wheel brake on pull load 1028,0002  
3 – Friction brake for push and pull load

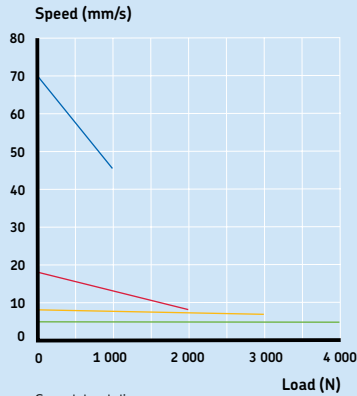
Performance diagram

Motor:  
D1 - 12 V DC



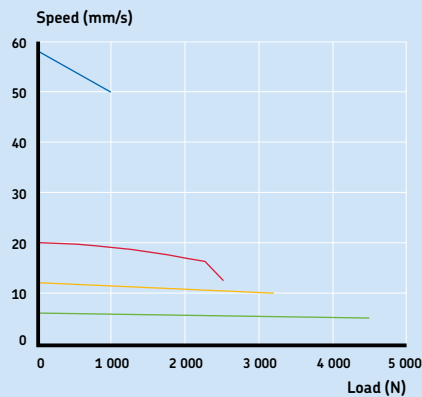
Speed-load diagram

Motor:  
D2 - 24 V DC



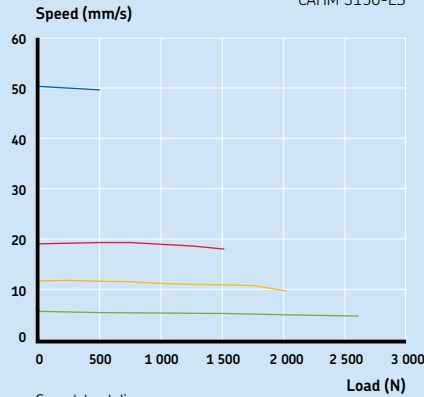
Speed-load diagram

Motor:  
A4 - 3x400 V AC



Speed-load diagram

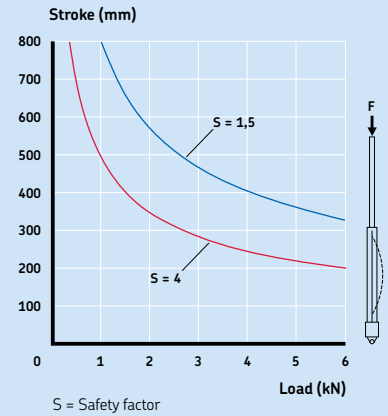
Motor:  
A2 - 230 V AC



Speed-load diagram

— CAHM 3110-LN  
— CAHM 3130-LN  
— CAHM 3130-LS  
— CAHM 3150-LS

Safety factor load conditions



S = Safety factor

Technical data

	Unit	CAHM-3110-LN0XXX-D1	CAHM-3130-LN0XXX-D1	CAHM-3130-LS0XXX-D1	CAHM-3150-LS0XXX-D1
Motor	—	D1	D1	D1	D1
Voltage	V DC	12	12	12	12
Screw type	—	LN	LN	LS	LS
Rated push load	N	1 000	2 000 <sup>5)</sup>	3 000 <sup>3)</sup>	4 000 <sup>2)</sup>
Rated pull load	N	1 000	2 000	3 000	4 000
Speed (at full load)	mm/s	50	17	8	5
Stroke	mm	100 to 700	100 to 700	100 to 700	100 to 700
Retracted length	mm	S+230	S+230	S+230	S+230
Power consumption	W	192	168	168	168
Current consumption	A	16	14	14	14
Duty cycle	%	10 (1/9)	10 (1/9)	10 (1/9)	10 (1/9)
Ambient temperature	°C	-10 to +40	-10 to +40	-10 to +40	-10 to +40
Type of protection	IP	44	44	44	44
Weight (at 200 mm stroke)	kg	5	5	5	5
Color	—	Silver	Silver	Silver	Silver

<sup>1)</sup> Push load allowed up to 350 mm stroke (if S>350 mm, only pull load is allowed)

<sup>2)</sup> Push load allowed up to 400 mm stroke (if S>400 mm, only pull load is allowed)

<sup>3)</sup> Push load allowed up to 450 mm stroke (if S>450 mm, only pull load is allowed)

<sup>4)</sup> Push load allowed up to 500 mm stroke (if S>500 mm, only pull load is allowed)

<sup>5)</sup> Push load allowed up to 600 mm stroke (if S>600 mm, only pull load is allowed)

<sup>6)</sup> Push load allowed up to 650 mm stroke (if S>650 mm, only pull load is allowed)

## Technical data

	Unit	CAHM-3110- LNOXXX-D2	CAHM-3130- LNOXXX-D2	CAHM-3130- LSOXXX-D2	CAHM-3150- LSOXXX-D2
Motor	–	D2	D2	D2	D2
Voltage	V DC	24	24	24	24
Screw type	–	LN	LN	LS	LS
Rated push load	N	1 000	2 000 <sup>5)</sup>	3 000 <sup>3)</sup>	4 000 <sup>2)</sup>
Rated pull load	N	1 000	2 000	3 000	4 000
Speed (at full load)	mm/s	45	18	8	5
Stroke	mm	100 to 700	100 to 700	100 to 700	100 to 700
Retracted length	mm	S+230	S+230	S+230	S+230
Power consumption	W	192	144	168	168
Current consumption	A	8	6	7	7
Duty cycle	%	10 (1/9)	10 (1/9)	10 (1/9)	10 (1/9)
Ambient temperature	°C	-10 to +40	-10 to +40	-10 to +40	-10 to +40
Type of protection	IP	44	44	44	44
Weight (at 200 mm stroke)	kg	5	5	5	5
Color	–	Silver	Silver	Silver	Silver
	Unit	CAHM-3110- LNOXXX-A4	CAHM-3130- LNOXXX-A4	CAHM-3150- LNOXXX-A4	CAHM-3150- LSOXXX-A4
Motor	–	A4	A4	A4	A4
Voltage	V AC	3x400	3x400	3x400	3x400
Screw type	–	LN	LN	LN	LS
Rated push load	N	1 000	2 500 <sup>4)</sup>	3 200 <sup>3)</sup>	4 500 <sup>1)</sup>
Rated pull load	N	1 000	2 500	3 200	4 500
Speed (at full load)	mm/s	50	15	10	5
Stroke	mm	100 to 700	100 to 700	100 to 700	100 to 700
Retracted length	mm	S+230	S+230	S+230	S+230
Power consumption	W	210	260	260	280
Current consumption	A	0,5	0,6	0,6	0,6
Duty cycle	%	40 (4/6)	40 (4/6)	40 (4/6)	40 (4/6)
Ambient temperature	°C	-10 to +40	-10 to +40	-10 to +40	-10 to +40
Type of protection	IP	54	54	54	54
Weight (at 200 mm stroke)	kg	5,6	5,6	5,6	5,6
Color	–	Silver	Silver	Silver	Silver
	Unit	CAHM-3110- LNOXXX-A2	CAHM-3130- LNOXXX-A2	CAHM-3150- LNOXXX-A2	CAHM-3150- LSOXXX-A2
Motor	–	A2	A2	A2	A2
Voltage	V AC	230	230	230	230
Screw type	–	LN	LN	LN	LS
Rated push load	N	500	1 000	1 500 <sup>6)</sup>	2 600 <sup>4)</sup>
Rated pull load	N	500	1 000	1 500	2 600
Speed (at full load)	mm/s	50	18	10	5
Stroke	mm	100 to 700	100 to 700	100 to 700	100 to 700
Retracted length	mm	S+230	S+230	S+230	S+230
Power consumption	W	230	200	200	230
Current consumption	A	1,1	1	1	1,1
Duty cycle	%	25 (2,5/7,5)	25 (2,5/7,5)	25 (2,5/7,5)	25 (2,5/7,5)
Ambient temperature	°C	-10 to +40	-10 to +40	-10 to +40	-10 to +40
Type of protection	IP	54	54	54	54
Weight (at 200 mm stroke)	kg	5,5	5,5	5,5	5,5
Color	–	Silver	Silver	Silver	Silver

<sup>1)</sup> Push load allowed up to 350 mm stroke (if S>350 mm, only pull load is allowed)<sup>2)</sup> Push load allowed up to 400 mm stroke (if S>400 mm, only pull load is allowed)<sup>3)</sup> Push load allowed up to 450 mm stroke (if S>450 mm, only pull load is allowed)<sup>4)</sup> Push load allowed up to 500 mm stroke (if S>500 mm, only pull load is allowed)<sup>5)</sup> Push load allowed up to 600 mm stroke (if S>600 mm, only pull load is allowed)<sup>6)</sup> Push load allowed up to 650 mm stroke (if S>650 mm, only pull load is allowed)