

Rotary actuator

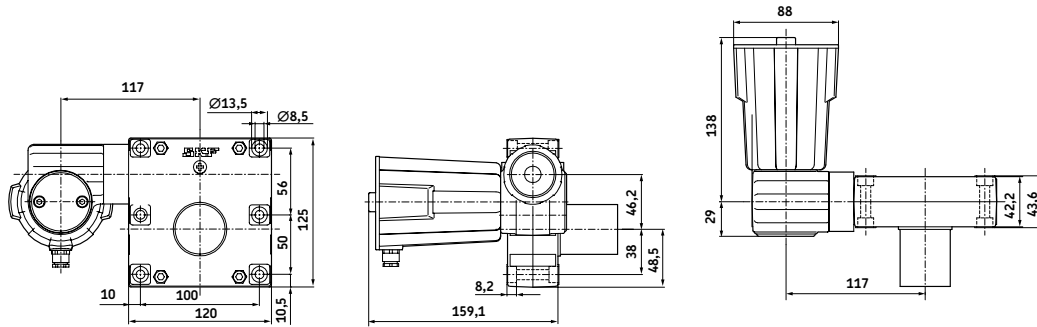
CRAB 17

Benefits

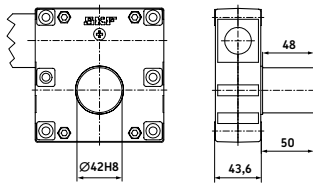
- Multiple output shafts
- Multiple motor options
- Small and compact



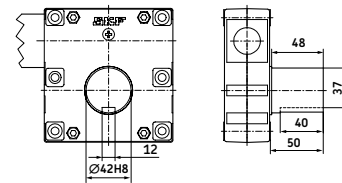
Dimensional drawing



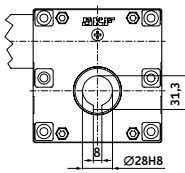
Standard shaft design



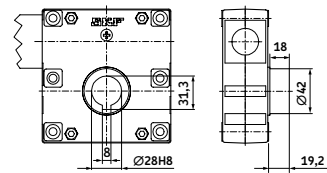
Type code 1: solid



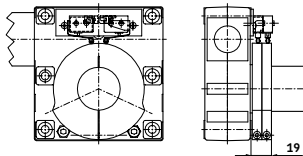
Type code 2: solid/keyway



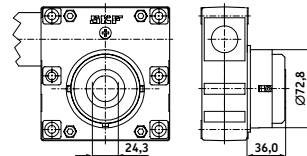
Type code 3: hollow/keyway



Type code 4: hollow/keyway for limit switch

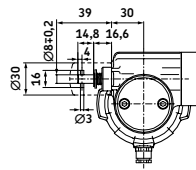
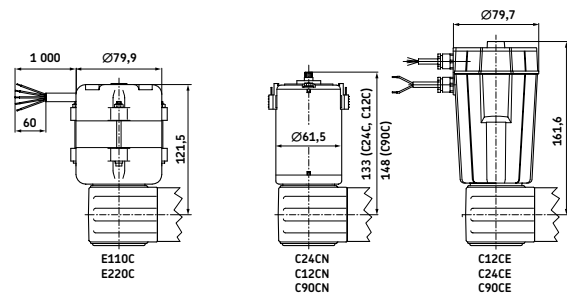


S - Limit switch unit



Type code 5: hollow/spines
Emergency manoeuvring, release on shaft (push) hollow shaft with splines

Motor design



A - Emergency manoeuvring, gearhouse for hand crank

Technical data

	Unit	CRAB 17
Max. angular working range	—	∞
Max. angular speed (theoretical)	°/s	180
Efficiency factor	%	50
Max. axial load	N	5 000
Max. tilt moment	Nm	100
Backlash	°	±0,25
Start torque	Nm	≈0,3 Nm
Temperature range	°C	−20 to +60
Weight	kg	3

Performance diagrams

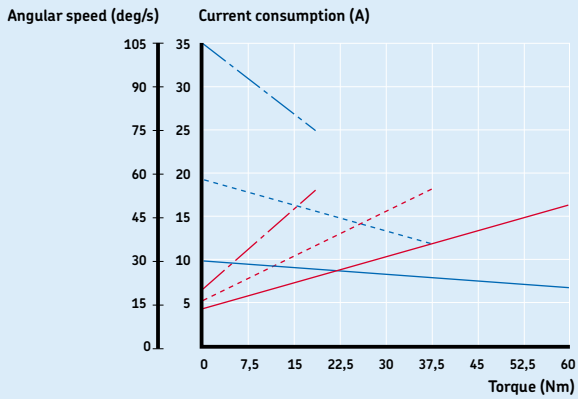


Diagram for motor C12C

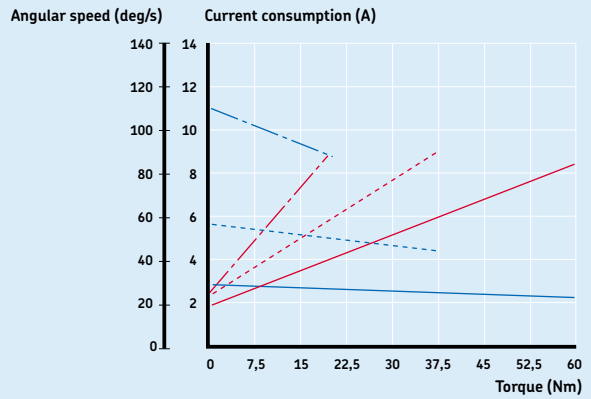


Diagram for motor C24C

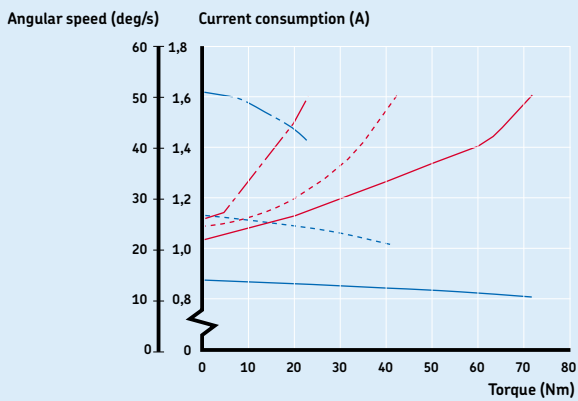


Diagram for motor E110C

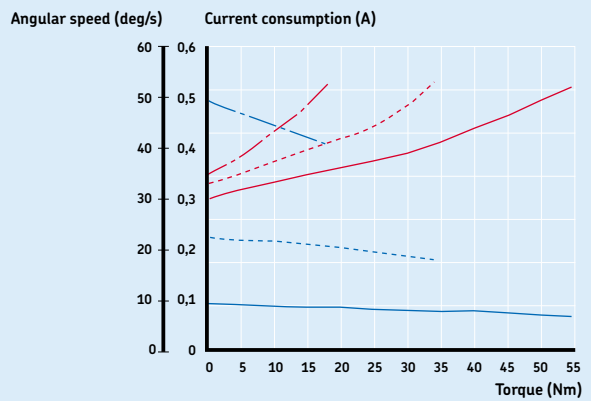
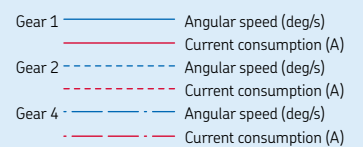
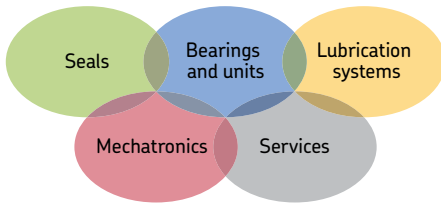


Diagram for motor E220C



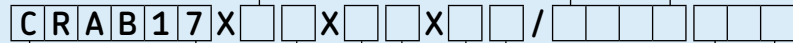


The Power of Knowledge Engineering

Drawing on five areas of competence and application-specific expertise amassed over more than 100 years, SKF brings innovative solutions to OEMs and production facilities in every major industry worldwide. These five competence areas include bearings and units, seals, lubrication systems, mechatronics (combining mechanics and electronics into intelligent systems), and a wide range of services, from 3-D computer modelling to advanced condition monitoring and reliability and asset management systems. A global presence provides SKF customers uniform quality standards and worldwide product availability.

Ordering key

Dynamic load (Nm) /Speed (deg/s)			Motor options	
60/30	38/58	19/110	12 V DC	C12C
60/30	38/58	19/110	24 V DC	C24C
105/30	53/55	38/110	90 V DC	C90C
70/13	40/27	22/52	120 V AC/60 Hz	E110C
55/13	34/27	18/52	230 V AC/50 Hz	E220C
1	2	4		



Type

Emergency manoeuvre:

- None -
- Hand crank A
- Release on shaft (only with standard shaft N° 5) B

Shaft design:

- Solid 1
- Solid / keyway 2
- Hollow / keyway 3
- Hollow / keyway for limit switch 4
- Hollow / splines 5
- Customer specification 6

Limit switch:

- No -
- Yes (fits shaft N° 1, 2, 4 and 5) S

Motor orientation:

- Rear R
- Upwards U
- Front F
- Downwards D

Motor assembly:

- Right R
- Left L

Option for CxxC motors:

- No cable -
- Encoder E2
- Motor without cover N
- EMC filter M
- Straight, 2,0 m T2
- Jack plug, 2,0 m T2P

© SKF is a registered trademark of the SKF Group

© SKF Group 2010

The contents of this publication are the copyright of the publisher and may not be reproduced (even extracts) unless prior written permission is granted. Every care has been taken to ensure the accuracy of the information contained in this publication but no liability can be accepted for any loss or damage whether direct, indirect or consequential arising out of the use of the information contained herein.

PUB MT/P8 10971 EN · August 2010

Printed in Sweden on environmentally friendly paper.

