

# Dovetail slides



5 Positioning systems

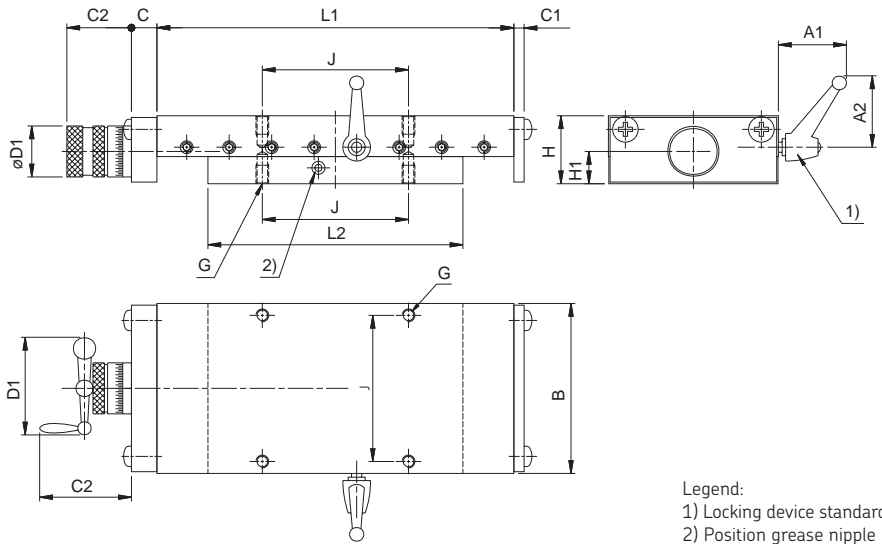
Dovetail slides

Dovetail slides

SSM / SSK

SSM – with micrometer ring with spring preloading, allowing easy turning. One division equals 0,02 mm.

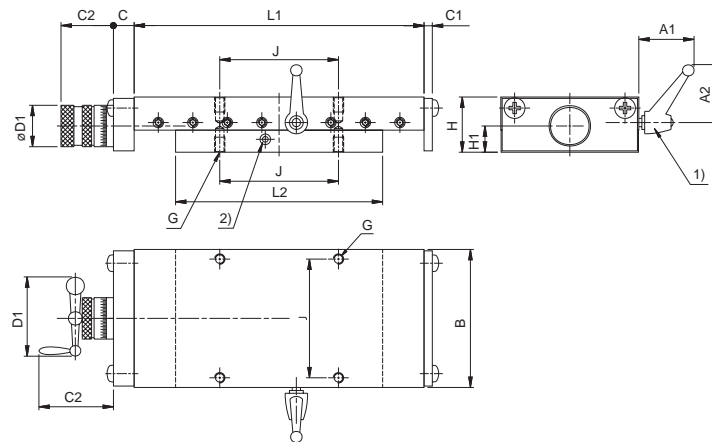
SSK – as SSM, but instead of knurled screw equipped with crank handle.



Designations	Dimensions				Stroke				Screw				Weight				
	B	H	L <sub>1</sub>	L <sub>2</sub>	S	A <sub>1</sub>	A <sub>2</sub>	C	C <sub>1</sub>	C <sub>2</sub>	D <sub>1</sub>	H <sub>1</sub>		Ø	J	G	GG
	mm																kg
SSM-50.080.025	50	25	80	50	25	37	42	19	6	31	23.5	12.3	M6x1	37	M4	0.7	
SSK-50.080.025	50	25	80	25	25	37	42	19	6	51	47.0	12.3	M6x1	37	M4	0.7	
SSM-50.130.025	50	25	130	25	25	37	42	19	6	31	23.5	12.3	M6x1	37	M4	1.2	
SSK-50.130.025	50	25	130	25	25	37	42	19	6	51	47.0	12.3	M6x1	37	M4	1.2	
SSM-50.130.050	50	25	130	50	50	37	42	19	6	31	23.5	12.3	M6x1	37	M4	1.0	
SSK-50.130.050	50	25	130	50	50	37	42	19	6	51	47.0	12.3	M6x1	37	M4	1.0	
SSM-50.155.050	50	25	155	50	50	37	42	19	6	31	23.5	12.3	M6x1	37	M4	1.3	
SSK-50.155.050	50	25	155	50	50	37	42	19	6	51	47.0	12.3	M6x1	37	M4	1.3	
SSM-50.155.075	50	25	155	75	75	37	42	19	6	31	23.5	12.3	M6x1	37	M4	1.2	
SSK-50.155.075	50	25	155	75	75	37	42	19	6	51	47.0	12.3	M6x1	37	M4	1.2	
SSM-50.180.075	50	25	180	75	75	37	42	19	6	31	23.5	12.3	M6x1	37	M4	1.4	
SSK-50.180.075	50	25	180	75	75	37	42	19	6	51	47.0	12.3	M6x1	37	M4	1.4	
SSM-50.205.100	50	25	205	100	100	37	42	19	6	31	23.5	12.3	M6x1	37	M4	1.7	
SSK-50.205.100	50	25	205	100	100	37	42	19	6	51	47.0	12.3	M6x1	37	M4	1.7	
SSM-75.105.025	75	32	105	75	25	38	42	21	6	38	30.0	15	M10x1	62	M5	1.9	
SSK-75.105.025	75	32	105	75	25	38	42	21	6	54	47.0	15	M10x1	62	M5	1.9	
SSM-75.155.050	75	32	155	100	50	38	42	21	6	38	30.0	15	M10x1	62	M5	2.6	
SSK-75.155.050	75	32	155	100	50	38	42	21	6	54	47.0	15	M10x1	62	M5	2.6	
SSM-75.205.050	75	32	205	150	50	38	42	21	6	38	30.0	15	M10x1	62	M5	3.4	
SSK-75.205.050	75	32	205	150	50	38	42	21	6	54	47.0	15	M10x1	62	M5	3.4	
SSM-75.155.075	75	32	155	75	75	38	42	21	6	38	30.0	15	M10x1	62	M5	2.3	
SSK-75.155.075	75	32	155	75	75	38	42	21	6	54	47.0	15	M10x1	62	M5	2.3	
SSM-75.180.075	75	32	180	100	75	38	42	21	6	38	30.0	15	M10x1	62	M5	2.8	
SSK-75.180.075	75	32	180	100	75	38	42	21	6	54	47.0	15	M10x1	62	M5	2.8	
SSM-75.205.100	75	32	205	100	100	38	42	21	6	38	30.0	15	M10x1	62	M5	3.0	
SSK-75.205.100	75	32	205	100	100	38	42	21	6	54	47.0	15	M10x1	62	M5	3.0	
SSM-75.255.100	75	32	255	150	100	38	42	21	6	38	30.0	15	M10x1	62	M5	3.8	
SSK-75.255.100	75	32	255	150	100	38	42	21	6	54	47.0	15	M10x1	62	M5	3.8	
SSM-75.305.150	75	32	305	150	150	38	42	21	6	38	30.0	15	M10x1	62	M5	4.2	
SSK-75.305.150	75	32	305	150	150	38	42	21	6	54	47.0	15	M10x1	62	M5	4.2	

continued

SSM / SSK  
(continued)



Legend:  
1) Locking device standard  
2) Position grease nipple

continued

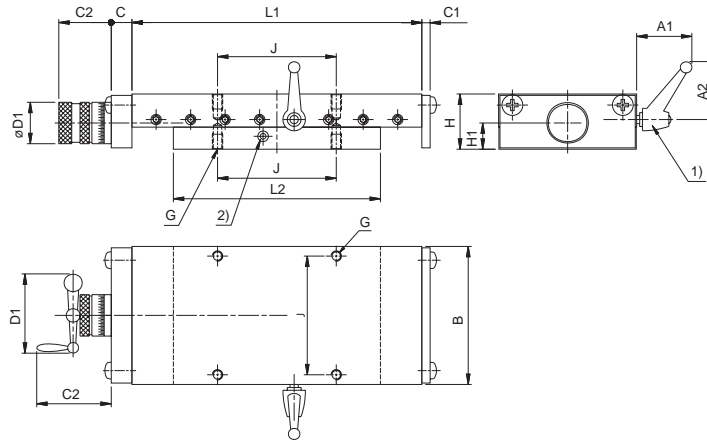
5

Designations	Dimensions				Stroke								Screw			Weight
	B	H	L <sub>1</sub>	L <sub>2</sub>	S	A <sub>1</sub>	A <sub>2</sub>	C	C <sub>1</sub>	C <sub>2</sub>	D <sub>1</sub>	H <sub>1</sub>	∅	J	G	GG
	mm															
SSM-100.160.050	100	40	160	100	50	40	45	21	6	38	30	19	M10×1	74	M6	4.4
SSK-100.160.050	100	40	160	100	50	40	45	21	6	54	47	19	M10×1	74	M6	4.4
SSM-100.260.050	100	40	260	200	50	40	45	21	6	38	30	19	M10×1	74	M6	7.2
SSK-100.260.050	100	40	260	200	50	40	45	21	6	54	47	19	M10×1	74	M6	7.2
SSM-100.210.100	100	40	210	100	100	40	45	21	6	38	30	19	M10×1	74	M6	5.1
SSK-100.210.100	100	40	210	100	100	40	45	21	6	54	47	19	M10×1	74	M6	5.1
SSM-100.310.100	100	40	310	200	100	40	45	21	6	38	30	19	M10×1	74	M6	7.9
SSK-100.310.100	100	40	310	200	100	40	45	21	6	54	47	19	M10×1	74	M6	7.9
SSM-100.310.150	100	40	310	150	150	40	45	21	6	38	30	19	M10×1	74	M6	7.1
SSK-100.310.150	100	40	310	150	150	40	45	21	6	54	47	19	M10×1	74	M6	7.1
SSM-100.410.150	100	40	410	250	150	40	45	21	6	38	30	19	M10×1	74	M6	10.0
SSK-100.410.150	100	40	410	250	150	40	45	21	6	54	47	19	M10×1	74	M6	10.0
SSM-100.410.200	100	40	410	200	200	40	45	21	6	38	30	19	M10×1	74	M6	9.2
SSK-100.410.200	100	40	410	200	200	40	45	21	6	54	47	19	M10×1	74	M6	9.2
SSM-100.510.200	100	40	510	300	200	40	45	21	6	38	30	19	M10×1	74	M6	12.1
SSK-100.510.200	100	40	510	300	200	40	45	21	6	54	47	19	M10×1	74	M6	12.1
SSM-150.310.100	150	50	310	200	100	45	62	28	8	53	47	24	Tr16×2	130	M8	15.4
SSK-150.310.100	150	50	310	200	100	45	62	28	8	92	103	24	Tr16×2	130	M8	15.4
SSM-150.510.100	150	50	510	400	100	45	62	28	8	53	47	24	Tr16×2	130	M8	26.0
SSK-150.510.100	150	50	510	400	100	45	62	28	8	92	103	24	Tr16×2	130	M8	26.0
SSM-150.410.200	150	50	410	200	200	45	62	28	8	53	47	24	Tr16×2	130	M8	17.8
SSK-150.410.200	150	50	410	200	200	45	62	28	8	92	103	24	Tr16×2	130	M8	17.8
SSM-150.610.200	150	50	610	400	200	45	62	28	8	53	47	24	Tr16×2	130	M8	28.5
SSK-150.610.200	150	50	610	400	200	45	62	28	8	92	103	24	Tr16×2	130	M8	28.5
SSM-150.510.300	150	50	510	200	300	45	62	28	8	53	47	24	Tr16×2	130	M8	20.2
SSK-150.510.300	150	50	510	200	300	45	62	28	8	92	103	24	Tr16×2	130	M8	20.2
SSM-150.710.300	150	50	710	400	300	45	62	28	8	53	47	24	Tr16×2	130	M8	30.9
SSK-150.710.300	150	50	710	400	300	45	62	28	8	92	103	24	Tr16×2	130	M8	30.9
SSM-150.710.400	150	50	710	300	400	45	62	28	8	53	47	24	Tr16×2	130	M8	28.0
SSK-150.710.400	150	50	710	300	400	45	62	28	8	92	103	24	Tr16×2	130	M8	28.0
SSM-150.810.400	150	50	810	400	400	45	62	28	8	53	47	24	Tr16×2	130	M8	33.3
SSK-150.810.400	150	50	810	400	400	45	62	28	8	92	103	24	Tr16×2	130	M8	33.3

continued

5 Positioning systems  
Dovetail slides/Compact cross tables

SSM / SSK  
(continued)



Legend:  
1) Locking device standard  
2) Position grease nipple

continued

Designations	Dimensions				Stroke				Screw			Weight				
	B	H	L <sub>1</sub>	L <sub>2</sub>	S	A <sub>1</sub>	A <sub>2</sub>	C	C <sub>1</sub>	C <sub>2</sub>	D <sub>1</sub>	H <sub>1</sub>	Ø	J	G	GG
	mm															kg
SSM-200.310.100	200	60	310	200	100	45	62	28	8	53	47	25.0	Tr16x2	170	M8	24.7
SSK-200.310.100	200	60	310	200	100	45	62	28	8	92	103	25.0	Tr16x2	170	M8	24.7
SSM-200.410.100	200	60	410	300	100	45	62	28	8	53	47	25.0	Tr16x2	170	M8	33.2
SSK-200.410.100	200	60	410	300	100	45	62	28	8	92	103	25.0	Tr16x2	170	M8	33.2
SSM-200.510.200	200	60	510	300	200	45	62	28	8	53	47	25.0	Tr16x2	170	M8	37.2
SSK-200.510.200	200	60	510	300	200	45	62	28	8	92	103	25.0	Tr16x2	170	M8	37.2
SSM-200.610.200	200	60	610	400	200	45	62	28	8	53	47	25.0	Tr16x2	170	M8	45.7
SSK-200.610.200	200	60	610	400	200	45	62	28	8	92	103	25.0	Tr16x2	170	M8	45.7
SSM-200.610.300	200	60	610	300	300	45	62	28	8	53	47	25.0	Tr16x2	170	M8	41.1
SSK-200.610.300	200	60	610	300	300	45	62	28	8	92	103	25.0	Tr16x2	170	M8	41.1
SSM-200.710.300	200	60	710	400	300	45	62	28	8	53	47	25.0	Tr16x2	170	M8	49.6
SSK-200.710.300	200	60	710	400	300	45	62	28	8	92	103	25.0	Tr16x2	170	M8	49.6
SSM-200.710.400	200	60	710	300	400	45	62	28	8	53	47	25.0	Tr16x2	170	M8	45.0
SSK-200.710.400	200	60	710	300	400	45	62	28	8	92	103	25.0	Tr16x2	170	M8	45.0
SSM-200.810.400	200	60	810	400	400	45	62	28	8	53	47	25.0	Tr16x2	170	M8	53.5
SSK-200.810.400	200	60	810	400	400	45	62	28	8	92	103	25.0	Tr16x2	170	M8	53.5
SSM-300.410.100	300	75	410	300	100	55	74	20	10	80	66	34.5	Tr20x4	260	M10	64.6
SSK-300.410.100	300	75	410	300	100	55	74	20	10	146	125	34.5	Tr20x4	260	M10	64.6
SSM-300.510.100	300	75	510	400	100	55	74	20	10	80	66	34.5	Tr20x4	260	M10	80.7
SSK-300.510.100	300	75	510	400	100	55	74	20	10	146	125	34.5	Tr20x4	260	M10	80.7
SSM-300.510.200	300	75	510	300	200	55	74	20	10	80	66	34.5	Tr20x4	260	M10	72.4
SSK-300.510.200	300	75	510	300	200	55	74	20	10	146	125	34.5	Tr20x4	260	M10	72.4
SSM-300.610.200	300	75	610	400	200	55	74	20	10	80	66	34.5	Tr20x4	260	M10	88.6
SSK-300.610.200	300	75	610	400	200	55	74	20	10	146	125	34.5	Tr20x4	260	M10	88.6
SSM-300.710.300	300	75	710	400	300	55	74	20	10	80	66	34.5	Tr20x4	260	M10	96.4
SSK-300.710.300	300	75	710	400	300	55	74	20	10	146	125	34.5	Tr20x4	260	M10	96.4
SSM-300.810.400	300	75	810	400	400	55	74	20	10	80	66	34.5	Tr20x4	260	M10	104.3
SSK-300.810.400	300	75	810	400	400	55	74	20	10	146	125	34.5	Tr20x4	260	M10	104.3
SSM-300.1010.500	300	75	1010	500	500	55	74	20	10	80	66	34.5	Tr20x4	260	M10	128.3
SSK-300.1010.500	300	75	1010	500	500	55	74	20	10	146	125	34.5	Tr20x4	260	M10	128.3

Slides, tables and compact cross tables

Ordering key

	R SS	[ ]	-	[ ]	-	[ ]	-	[ ]	-	[ ]	-	[ ]	-	[ ]	-	[ ]	-	[ ]	-	[ ]	
<b>Type:</b>																					
Precision slides with rail guide system, crossed rollers . . . . .	R																				
Dovetail slides . . . . .	S																				
Compact cross tables with rail guide system, crossed rollers . . . . .	T																				
<b>Versions:</b>																					
Only valid for dovetail tables:																					
For manual operation, with micrometer knurl . . . . .	SM																				
For manual operation, with hand crank . . . . .	SK																				
Only valid for precision tables:																					
For manual operation, with micrometer knurl . . . . .	SM																				
For manual operation, with hand crank . . . . .	SK																				
For motor drive . . . . .	SS																				
Only valid for compact cross tables:																					
For manual operation, without drive . . . . .	0																				
For manual operation, with micrometer knurl . . . . .	S																				
<b>Table width B [mm] (see tables):</b>																					
. . . . .																					85 - 300
<b>Length L1 or dimension Sx Sy [mm]:</b>																					
L1 for dovetail and precision slides . . . . .																					80 - 1010
Sx Sy for compact cross tables . . . . .																					025, 050, 100
<b>Nominal stroke [mm] (not for compact cross tables):</b>																					
See tables																					
<b>Designation suffix if desired:</b>																					
Slides or tables made of aluminium, black anodised . . . . .																					A
Slides with thick top: only for precision slides . . . . .																					D
Slides with thick top and T-slots: dovetail and precision slides . . . . .																					DT
Locking device for dovetail slides (standard) . . . . .																					AR 1
Locking device for precision slides and tables . . . . .																					AR 2
Locking device for compact cross tables (standard) . . . . .																					AR 3
<b>For motor drive only:</b>																					
Preloaded planetary roller screw for RSS - slides . . . . .																					R
<b>Screw diameter Ø in mm:</b>																					
Precision tables for RSS - slides . . . . .																					8 - 20
<b>Screw lead:</b>																					
1 - 5 mm for RSS - slides . . . . .																					01 - 15

- Example 1: R SS 200 - 710 - 300 - [ ] - R 1202
- Example 2: R SK 50 - 080 - 025
- Example 3: S SM 300 - 010 - 500 - AR1
- Example 4: S SK 50 - 080 - 025 - AR1
- Example 5: T 0 085 - 050 - [ ] - AR3